

# CERTIFICATE OF LOCATION OF GOVERNMENT CORNER

NORTH QUARTER Corner of Section 7, Township 105 N, Range 42 W, 5<sup>th</sup> P.M.

STATE OF MINNESOTA, County of MURRAY

At the corner location shown on the sketch

On 6-10-91 found a 6" x 8" x 12" STONE, FLUSH  
DATE

left monument as found,  lowered monument,  removed monument (explain)

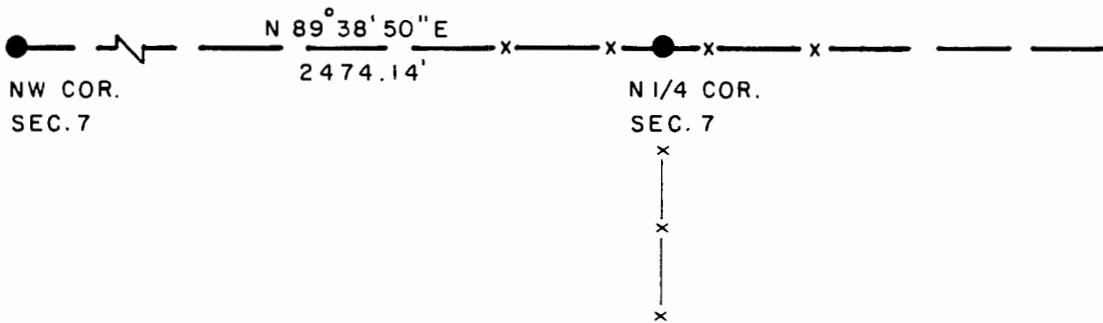
On \_\_\_\_\_ placed a \_\_\_\_\_  
DATE

### SKETCH OF REFERENCE TIES

NOTE:

MONUMENT IS  
NEXT TO & EAST OF WOOD CORNER  
FENCE POST (E-W-S)

GOOD TIES NOT AVAILABLE



1983 MURRAY COUNTY  
COORDINATE SYSTEM  
N = 126,684.335  
E = 455,808.608

BEARING IS IN COUNTY ORIENTATION

Statement of evidence relative to this corner location is on back of page

JBM. 7-30-91  
WMA 12.00.00.01

I hereby certify that this document and the data contained herein was prepared by me or under my direct supervision.

Bruce W. Shipp 8-12-91  
SIGNATURE DATE

Registration No. 17003

- Land Surveyor,  Professional Engineer  
 County Surveyor,  County Engineer

OFFICE OF THE COUNTY RECORDER  
County of MURRAY

I hereby certify that this document was filed in the Co. Recorders office of \_\_\_\_\_ M. on the \_\_\_\_\_ day of AUG 5 1991 A.D., 19 \_\_\_\_\_

County Recorder James V. Johnson

By \_\_\_\_\_, Deputy

DOCUMENT NO. \_\_\_\_\_

North Quarter Corner of Section 7, Township 105 North, Range 42 West

The DNR Bureau of Engineering contacted the following for survey information:

Mn Secretary of State's Office  
Murray County Recorder's Office and Highway Engineer's Office  
Mn/DOT Office in Willmar  
Mn/DOT Office in St. Paul  
Sioux Engineering of Windom  
Sioux Engineering of Tyler  
Madsen Land Surveying of Fairmont  
Madsen Land Surveying of Worthington  
Rieke Carroll Muller Associates of Gaylord

- 1861 U.S. General Land Office notes obtained from the Secretary of State's Office show the corner marked with a post in a mound with trench and pits as per instructions.
- 1900 Surveyor's Record Book A, page 101, obtained from the County Recorder's Office contains a survey by J. W. Woolstencraft. This survey is also contained in a Surveyor's Record Book obtained from the County Highway Engineer's Office. Survey shows a stone and stake at corner but does not indicate if found or set. The corner is shown:  
2468 feet from the northeast corner of Section 12
- 1901 A Surveyor's Record Book A, page 126, obtained from the County Recorder's Office contains a survey by J. W. Woolstencraft. Survey shows that the government mound, pits, and stake were found at corner.
- 1991 June, DNR Bureau of Engineering found a 6" by 8" by 12" stone on the east side of a corner fence post with fences east, west, and south at corner. The stone was found to be:  
2474.14 feet from the northeast corner of Section 12

Analysis of the above information led the DNR Bureau of Engineering to conclude that the found stone marks the location of the corner.